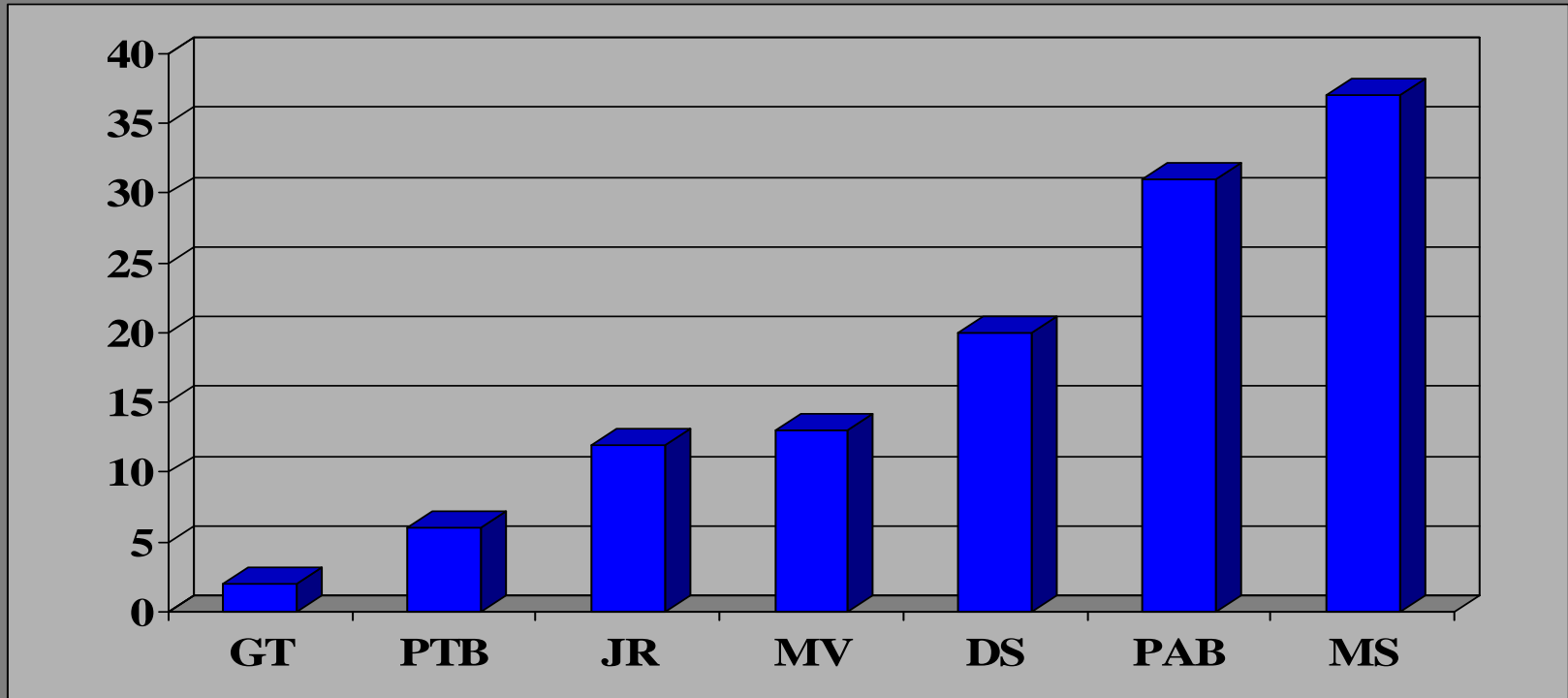


**BLAIS EXCESS & SURPLUS AGENCY OF TEXAS LTD.
COMBINED STAFF TENURE TOTALS 266 YEARS
OF EXECUTIVE LINE EXPERTISE AS OF JUNE 1, 2010**

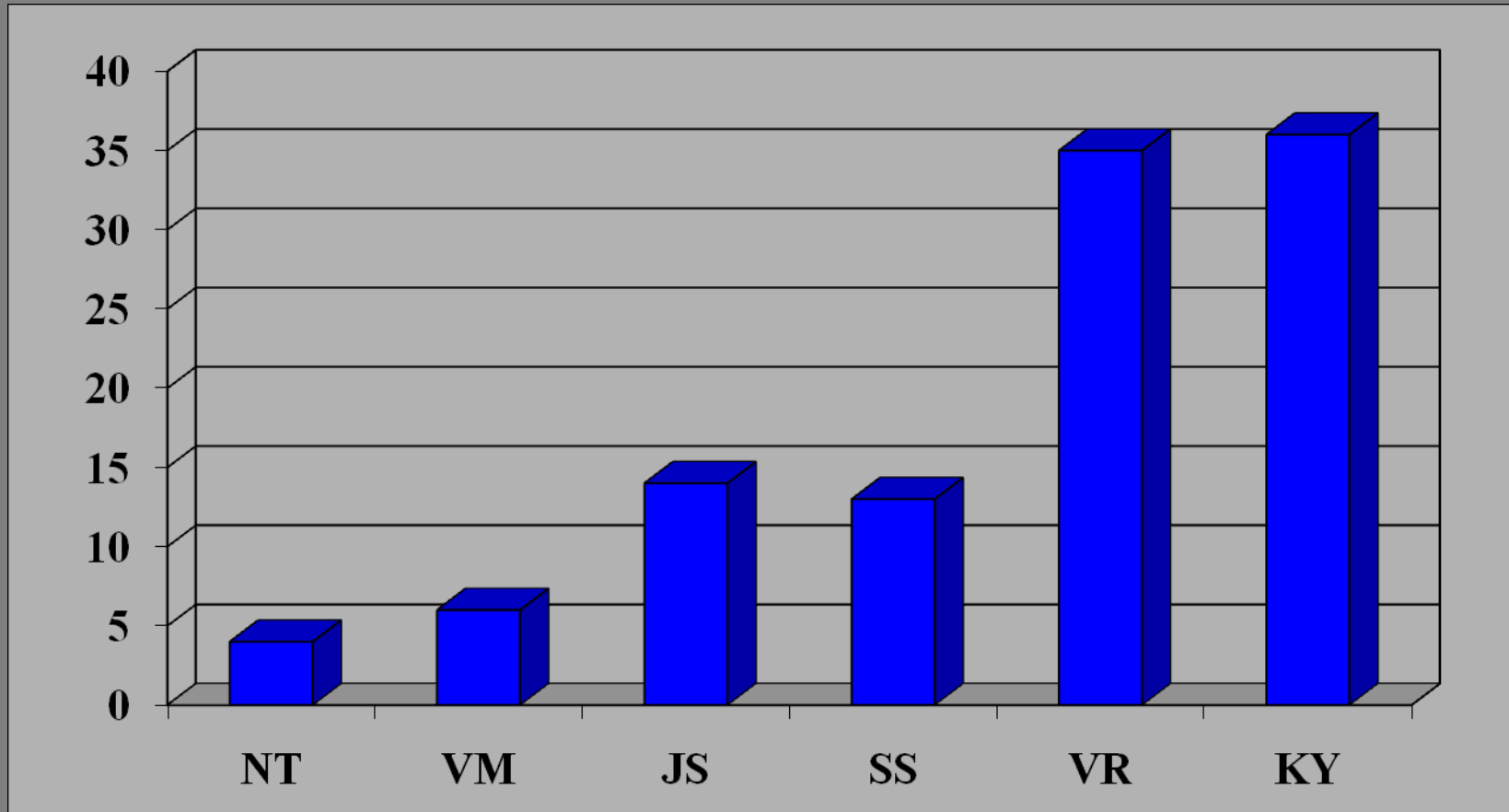


BLAIS EXCESS & SURPLUS AGENCY OF TEXAS LTD. DALLAS & AUSTIN STAFF TENURE (121 YEARS)



**Gina Tram (GT) Philip T. Blais (PTB)
Jenny Ridgley (JR) Mona Voelkner (MV) Dave Swann (DS)
Pam A. Blais (PAB) Mark Swope (MS)-Austin**

BLAIS EXCESS & SURPLUS AGENCY OF TEXAS LTD. HOUSTON STAFF TENURE (108 YEARS)



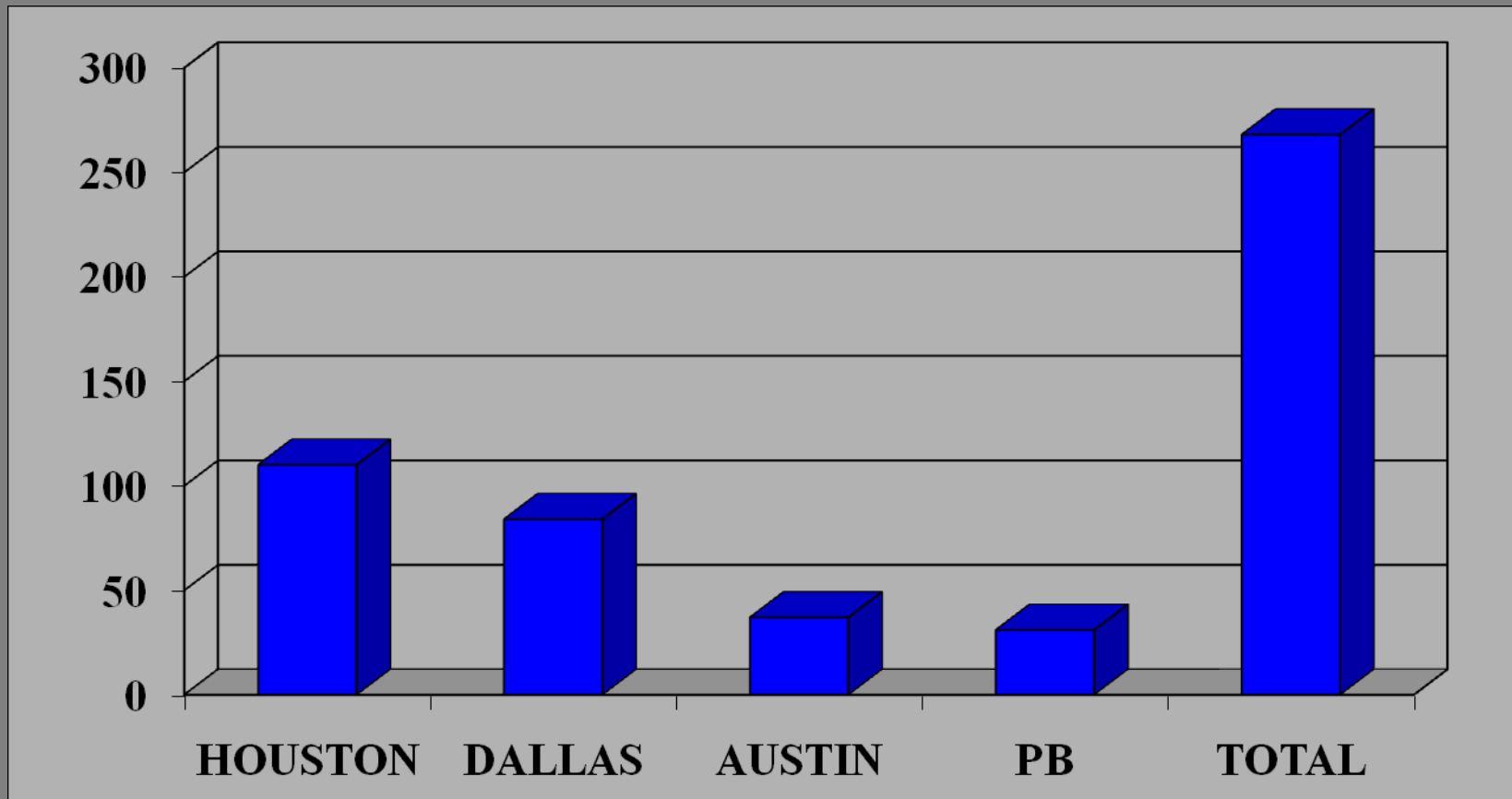
Vernell Morgan (VM) Janel Schmidt (JS)
Scott Stortzum (SS) Vikki Robinson (VR)
Kathy Younger (KY) Nhu Tran (NT)

**BLAIS EXCESS & SURPLUS AGENCY OF TEXAS LTD.
PHIL BLAIS TENURE (31 YEARS)**



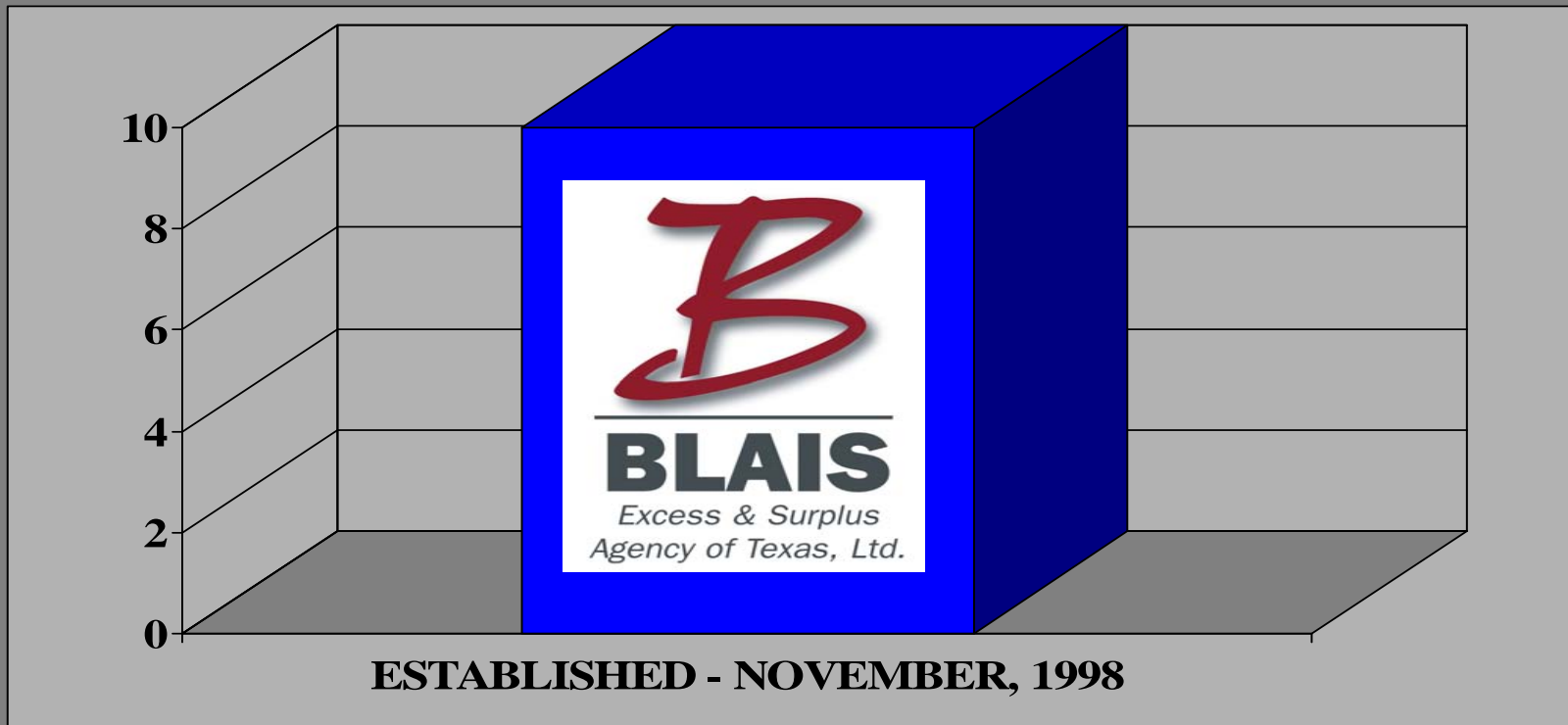
PHILIP L. BLAIS

BLAIS EXCESS & SURPLUS AGENCY OF TEXAS LTD. COMBINED STAFF TENURE (266 YEARS)



**HOUSTON (108 COMBINED YEARS) DALLAS (84 COMBINED YEARS)
AUSTIN (37 COMBINED YEARS) PHIL BLAIS (31 YEARS)
TOTAL = 266 COMBINED YEARS OF EXPERTISE**

**BLAIS EXCESS & SURPLUS AGENCY OF TEXAS LTD.
CREATED IN NOVEMBER, 1998**



**THE BLAIS ORGANIZATION WAS ESTABLISHED BY PHILIP L. BLAIS
NOVEMBER, 1998**